

Setting up TCP/IP printing on Mac OS X Mavericks (10.9)

You will need an Administrator password to continue.

Setting up TCP/IP printing on a Mac is slightly different from Windows. Many Windows drivers have a self-installer that automates the process entirely; with most Mac drivers, the installer only places the appropriate drivers on your system, leaving you to finalize the setup. While this might seem counter-intuitive, it allows much greater control over the driver setup, and actually completes faster than most Windows installs!

Conventions used in this document:

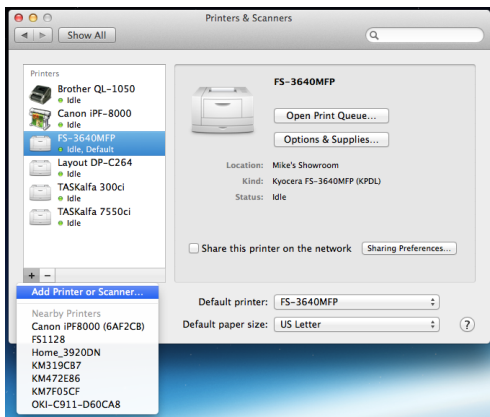
- **Bold Text** indicates a selection or choice you'll make in a dialogue box.
- *Italic Text* indicates a technical term, or an area of a dialogue box to pay close attention to.
- "Spotlight" means Spotlight Search, which you can quickly reach by ⌘-Spacebar.

Step 1: Preparing the Print Driver

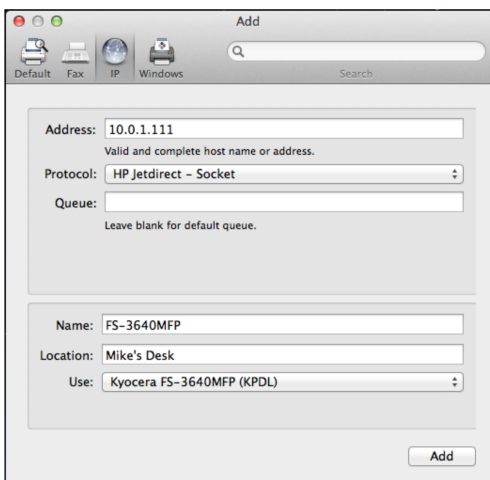
- 1) Determine which version of OS X you are running.
 - a) Click the Apple logo in the upper-left corner of any menu bar.
 - b) Choose **About This Mac**. You'll get a pop-up, which should say the OS X version (10.9.4, etc)
- 2) Download the appropriate driver package for your version of Mac OS.
- 3) The driver package may be supplied as an installer package, or just a PPD file.
 - a) If an installer is provided, run it and follow any prompts.
 - b) If just a PPD file is supplied, save it to your Desktop.

Step 2: Adding the Printer

- 1) Open **System Preferences**. (Applications menu, System Preferences; or Spotlight **System Preferences**)
- 2) Open **Printers & Scanners**.
- 3) Click the + mark at the bottom of the printer list, and choose **Add Printer or Scanner**.



- 4) Click the **IP** tab at the top.



- 5) In the *Address:* field, enter the copier's **TCP/IP address**.
- 6) In the *Protocol:* field, choose **HP JetDirect – Socket**.
 - a) This is similar to a RAW (port 9100) Windows port.
 - b) If your printer requires an LPR port, instead choose **Line Printer Daemon - LPD** in this step.
- 7) In the *Queue:* field, enter the **print queue name**, if needed.
- 8) In the *Name:* field, enter a **friendly name** for the printer.
- 9) Optional – In the *Location:* field, enter the **printer's location**.
- 10) For the *Use:* field,
 - a) If you ran an installer, the appropriate driver should be listed here already. If not, choose **Select Software**, and find it in the list.
 - b) If you just saved the PPD file, choose **Other...** and browse to where you saved the PPD. Select it.
- 11) Click **Add**. You may get a follow-up dialog where you can set configuration or accessory options.

- 12) Double-click the printer in the list, then in the menu bar choose **Printer**, then **Print Test Page**. Done!